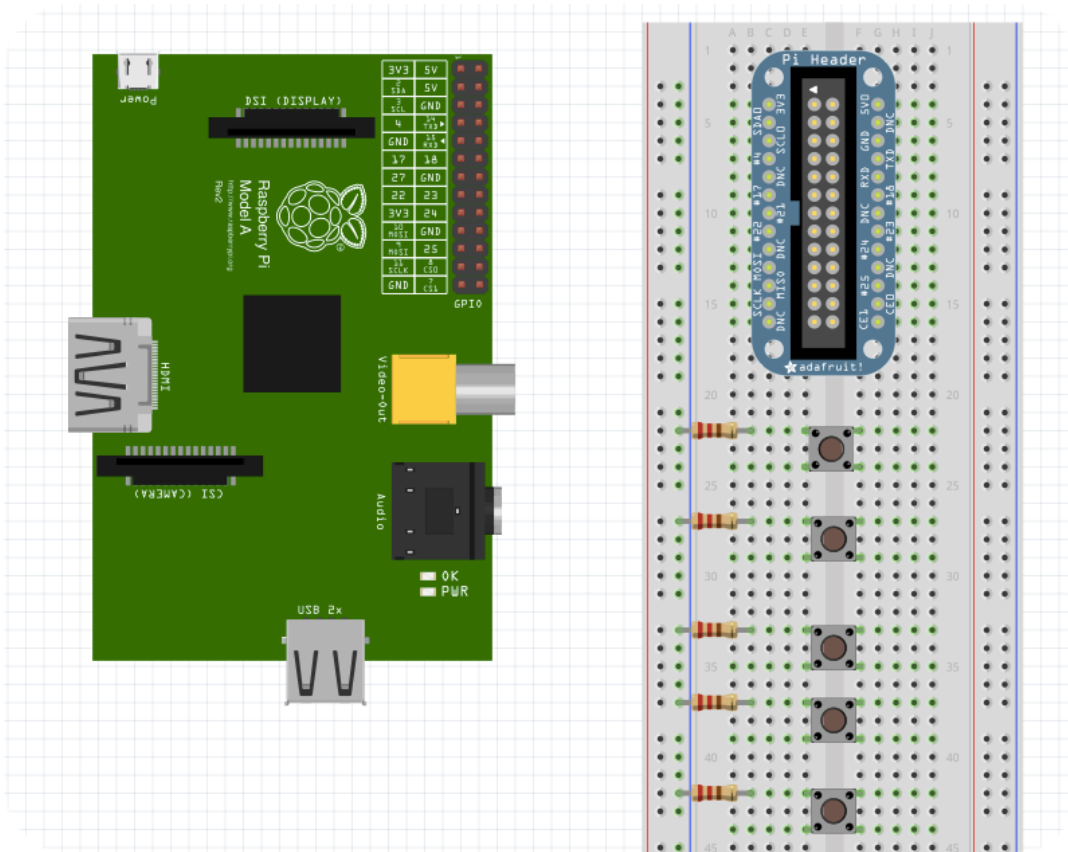
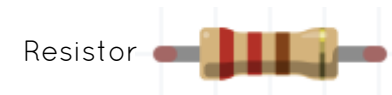


Wire Up the RPi-ano using the GPIO expansion board.

1. Draw a line connecting each of the push buttons to the GPIO expansion board.
2. Draw a line to ensure that the board is grounded.



3. Compare your wiring with a friend or the teacher's diagram
4. How many GPIO pins are available on the RPi. Excluding the special pins.
5. What are the special pins called and what is their purpose