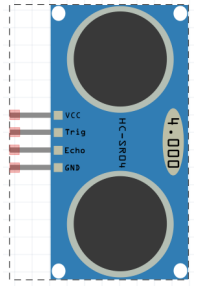


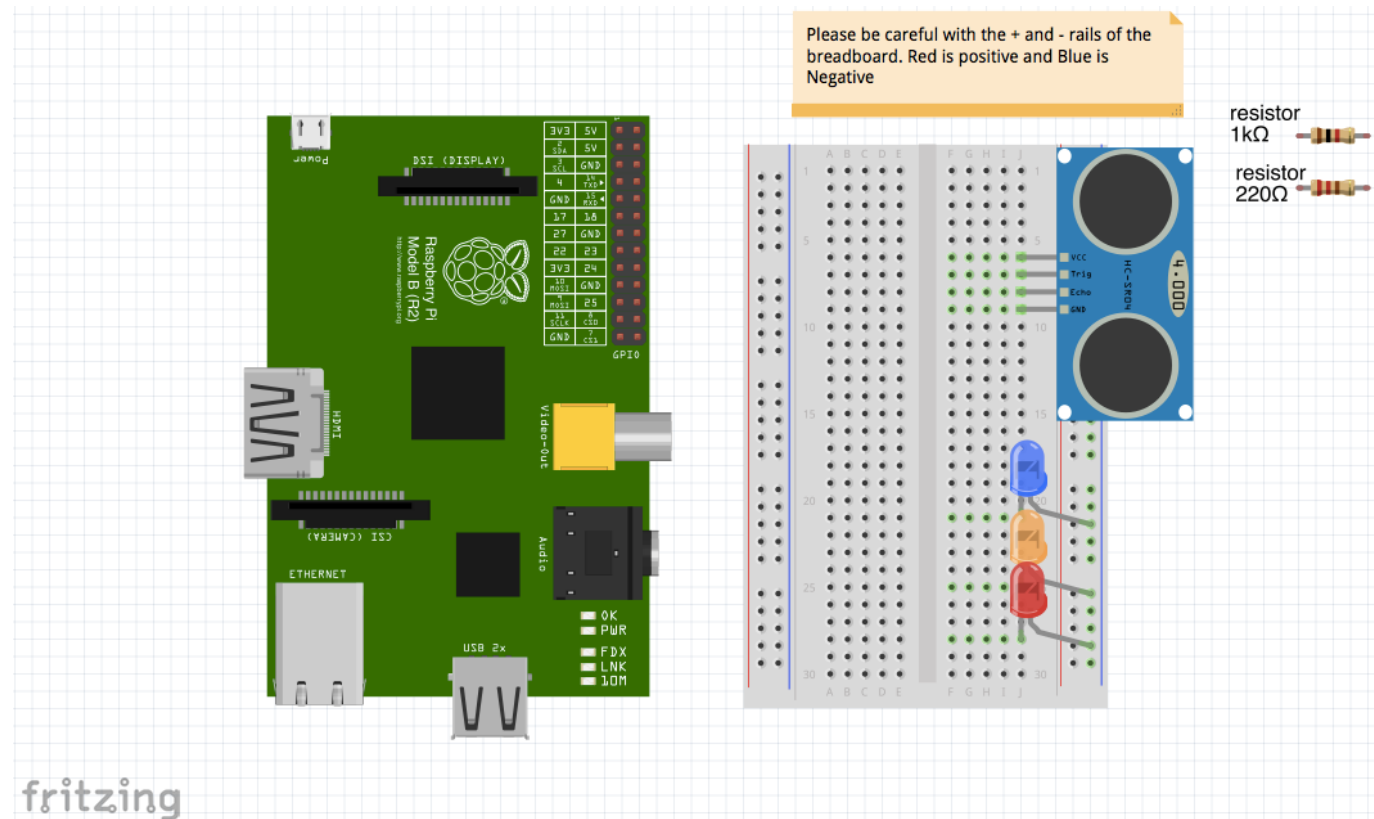
Wire Up the RPi with Ultrasonic Sensor

1. Draw a line connecting each of the Ultrasonic sensor to the GPIO pins on the RPi.
2. Ensure that you add the correct resistor for each component
3. Draw a line to ensure that the board is grounded.

Ultrasonic Sensor



Resistor



3. Compare your wiring with a friend or the teacher's diagram. Modify accordingly

4. What do each of the pins on the Ultrasonic sensor do?

5. What is an ultrasonic sensor measuring and how?